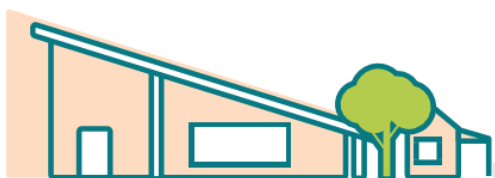




CRAIGMORE SOUTH PRIMARY SCHOOL

Learners today, leaders tomorrow



2025 annual report to the Community

Craigmore South Primary School

Craigmore South Primary School number: 1449

Partnership: Uleybury



School principal:

Bec Jamieson

Date of
endorsement:

23/03/2026



Government
of South Australia
Department for Education

Context Statement

Craigmore South Primary School caters for students from R-6. At the time of this report, the enrolment in 2025 is 225. Craigmore South Primary School is classified as Category 3 on the Department for Education Index of Educational Disadvantage. At the time of this report, the school population includes 15% Aboriginal students, 6% students with disabilities, 4% students with English as an additional language or dialect (EALD) funded background, 1% children/young people in care. Further information about the school is available on the school's website (including its context statement), as well as the My School website.

Data Source: Department for Education data holdings from Mid census captured in AUGUST 2025.

Governing Council Report

What an amazing and fun-filled ride we had at Craigmore South Primary School during 2025!

As the Chairperson of the Governing Council, this report is presented on behalf of everyone who has been part of this incredible journey.

A huge thank you goes to Bec Jamieson and the entire leadership team for their outstanding support, guidance and encouragement throughout the year. Their dedication and commitment has been instrumental in fostering a positive and inspiring environment for both staff, students and families.

Gratitude is also extended to the whole school staff team, whose hard work, passion and care have played a vital role in creating the wonderful year we have experienced. From classroom learning to extracurricular activities, every effort has contributed to making Craigmore South Primary a place where students thrive and feel proud to belong.

2025 has been a year of growth, achievement and building a strong community feeling over the whole school. Together, the school has continued to build strong connections, celebrate successes and create lasting memories. The Governing Council is proud to support such a dedicated and vibrant school community and looks forward to another year of progress and joy ahead.

The Governing Council would like to say a huge thank you to Fiona, for her continued support, running the school canteen. Fiona spends time teaching and supporting our year 4 - 6 students as they start working in the canteen, learning about money and serving their school community. Fiona also always achieves the highest standard of hygiene on her annual health check with the Playford Council.

In 2025, the Governing Council supported changing our uniform supplier to a company located in the Craigmore shops behind the school. This change will make it easier for existing and new families to purchase uniform items in-store.

The YMCA has continued providing an OSHC and Vacation care service for our school community. The number of students attending these sessions has remained steady and we know that this provides a valuable service to our families, not only through the term, but also during the holiday periods.

Over the year our school has raised and donated money to a number of charities, including:

- Muscular Dystrophy Australia - Turner House
- Cancer foundation - Yorktown House
- Heart Kids Super Hero Day - Mildera House
- Make a Wish Foundation - Gooronga House
- Variety S.A Team Avengers
- Jump Rope for Heart

We believe it is important to strengthen our sense of community by supporting and contributing positively to causes beyond our school.

Some of the highlights that the Governing Council have enjoyed watching our children being a part of this year have been:

- NAIDOC campfire cookout day. Here all the children, staff and families were able to cook their own damper on the campfire. We also had some very yummy kangaroo sausages and families were able to browse through stalls set up by community organisations.
- Pancake day. Pancake day is a wonderful day which is run by the canteen with the support of student helpers and family donations. All money raised goes to Uniting Care.
- The Book Fair was a great success this year. The library featured a wide selection of books for sale, and students had the opportunity to create their own wish lists. This initiative encouraged families to purchase books for their children and to stock up on gifts for birthdays and Christmas. Additionally, the more books families purchased, the more resources the library was able to acquire for our students.
- Book week is always something the students and staff get very excited about. Everyone went to extraordinary measures dressing up for the day. Watching the parade is always a highlight with our school families.
- We held Mothers and Fathers Day Stalls for families again this year and the gifts were amazing! A big thank you to all the helpers who assisted throughout the weeks and a special mention to Kylie for making all the very special mixed boxes they were a HUGE hit with the children.
- STEM week was a huge success. Mr A, Mr J-C and Mr Harvey all worked tirelessly to ensure all students had the opportunity to join in and experience STEM learning. During the week it was wonderful to see the younger classes supported by their buddy classes. A big thankyou to Mr Harvey, Mr A and Mr J-C.
- P.E week this year was very exciting with well planned and well organised daily events. Thank you again to Mr J-C and Mr A.
- Our wonderful SSOs take turns in setting up a daily lunch club play spaces. They utilise the hall and intervention rooms in the JP area along with outside spaces. This provides supported relationship building skills and team work opportunities alongside social and emotional support for our students.
- It is always lovely to see our school community come together each fortnight for our whole school assembly. More and more families are coming to watch their children hosting, sharing or receiving awards.
- The Year 6 Aquatics excursion was a fun filled day where lots of memories were made. Later in the year the they continued to build life long memories with the year 5 and 6 school camp to Woodhouse. The photos and stories shared sounded like they had lots of fun.
- We finished of our fun filled year with a whole school excursion to Water World. We were very lucky with the weather this year, past years have had to be cancelled so we were so pleased everyone enjoyed a day of swimming, socialising and sunshine.
- Although they didn't win sports day, Turner house achieved the highest house points and celebrated with and excursion to Elizabeth Bowland for ten pin bowling. They had a fabulous morning celebrating as a team.
- The biggest highlight for 2025, for myself personally, was the End of Year Concert. We had a huge turnout, the new grassed area filled right to the very back with students and families. The canteen was opened and each class performed on the stage for everyone to watch. The end of year raffle was another huge success. Thank you once again for everyone who supported this.

I would like to thank all the wonderful Governing Council members for all their support during the year and I am looking forward to a wonderful 2026.

Kind Regards
Stacey Hazelwood.

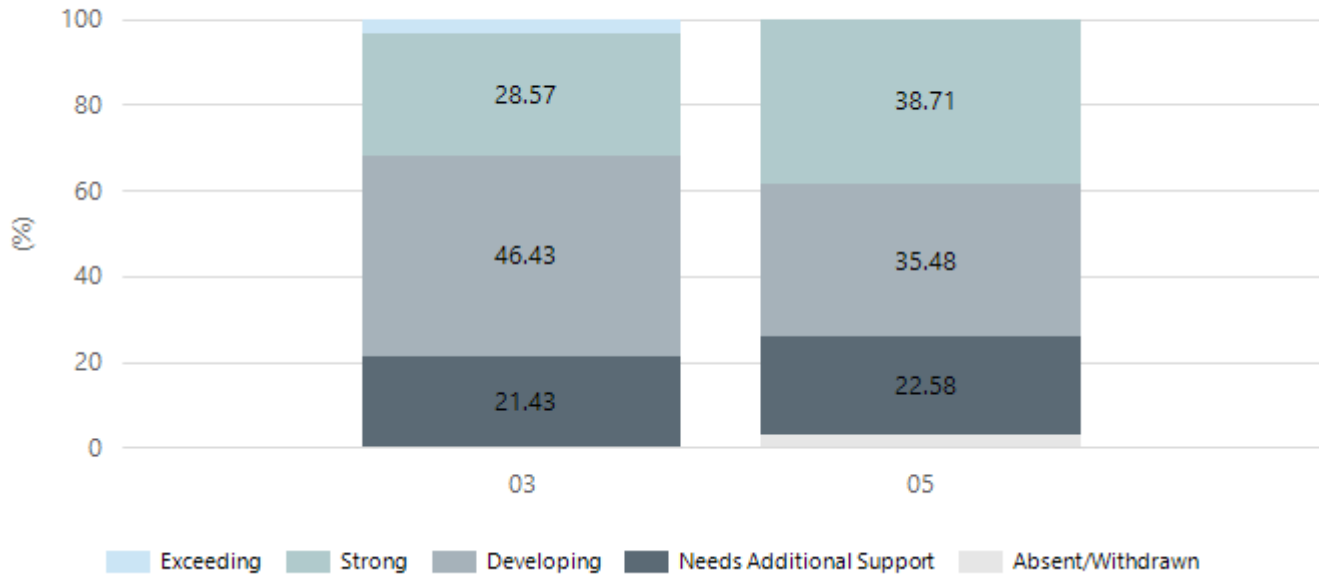
Performance

Summary

NAPLAN Proficiency

In 2023 the Australian Curriculum, Assessment and Reporting Authority (ACARA) - a Commonwealth Independent statutory authority - announced changes to NAPLAN performance reporting. The new approach replaces the previous numerical NAPLAN bands and the national minimum standard.

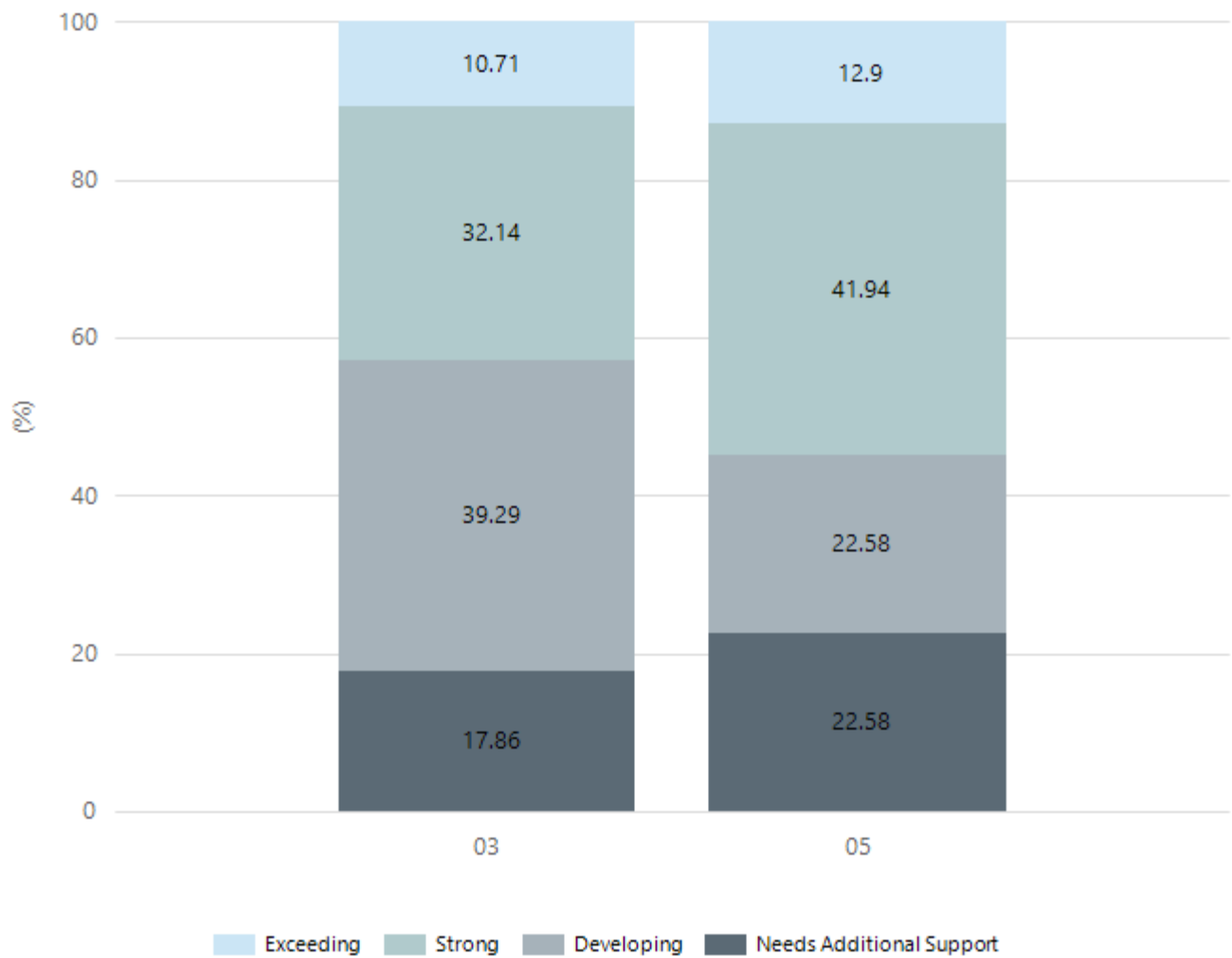
Numeracy



Year Level	03	05
Exceeding	1	
Strong	8	12
Developing	13	11
Needs Additional Support	6	7
Absent/Withdrawn		1
Total	28	31

Data Source: Department for Education Assessment Data Holdings, 2025. If there are less than 6 students who sat NAPLAN in a school, no information will be shown. If a year level has less than 6 students, that year level will not be shown in NAPLAN results.

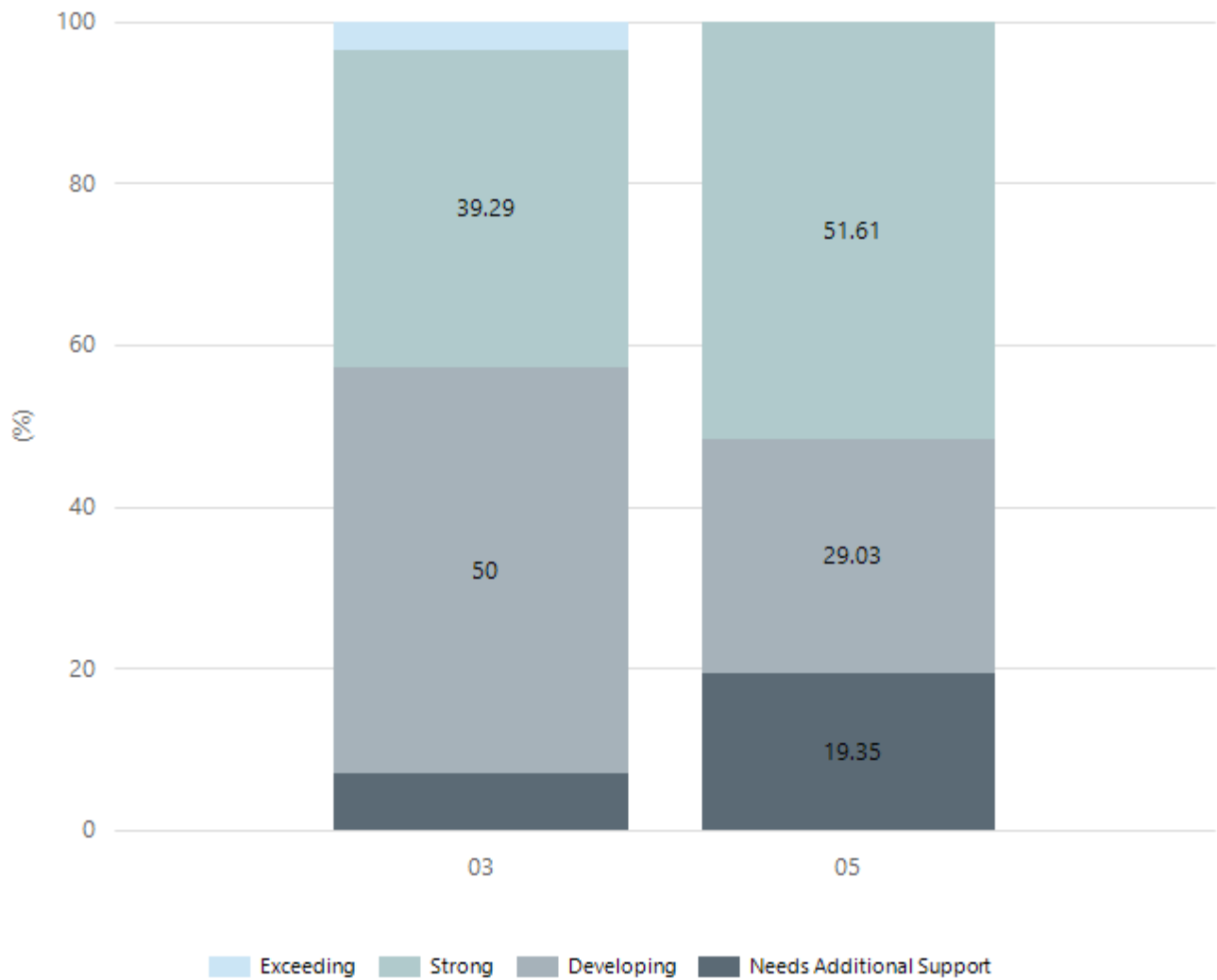
Reading



Year Level	03	05
Exceeding	3	4
Strong	9	13
Developing	11	7
Needs Additional Support	5	7
Total	28	31

Data Source: Department for Education Assessment Data Holdings, 2025. If there are less than 6 students who sat NAPLAN in a school, no information will be shown. If a year level has less than 6 students, that year level will not be shown in NAPLAN results.

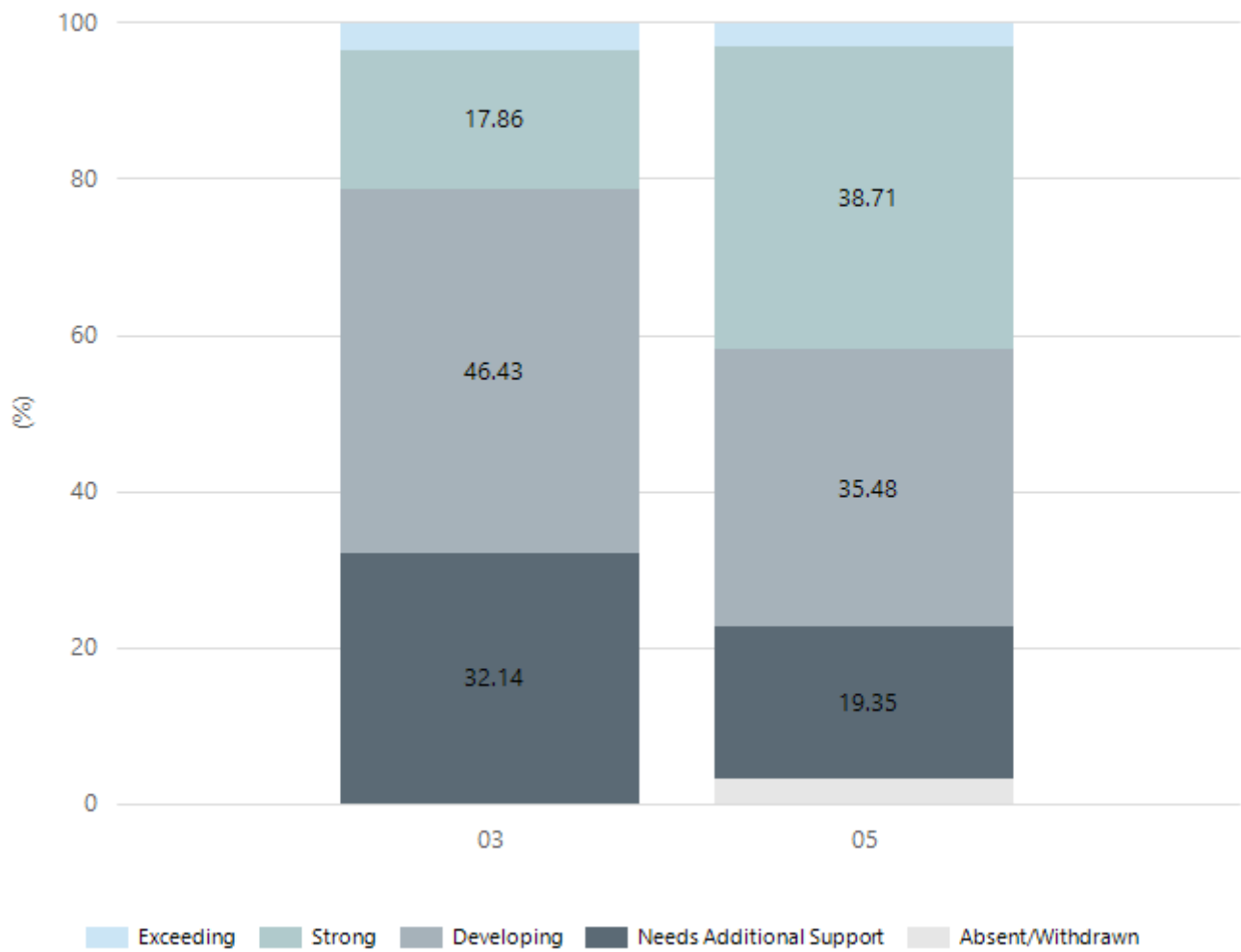
Writing



Year Level	03	05
Exceeding	1	
Strong	11	16
Developing	14	9
Needs Additional Support	2	6
Total	28	31

Data Source: Department for Education Assessment Data Holdings, 2025. If there are less than 6 students who sat NAPLAN in a school, no information will be shown. If a year level has less than 6 students, that year level will not be shown in NAPLAN results.

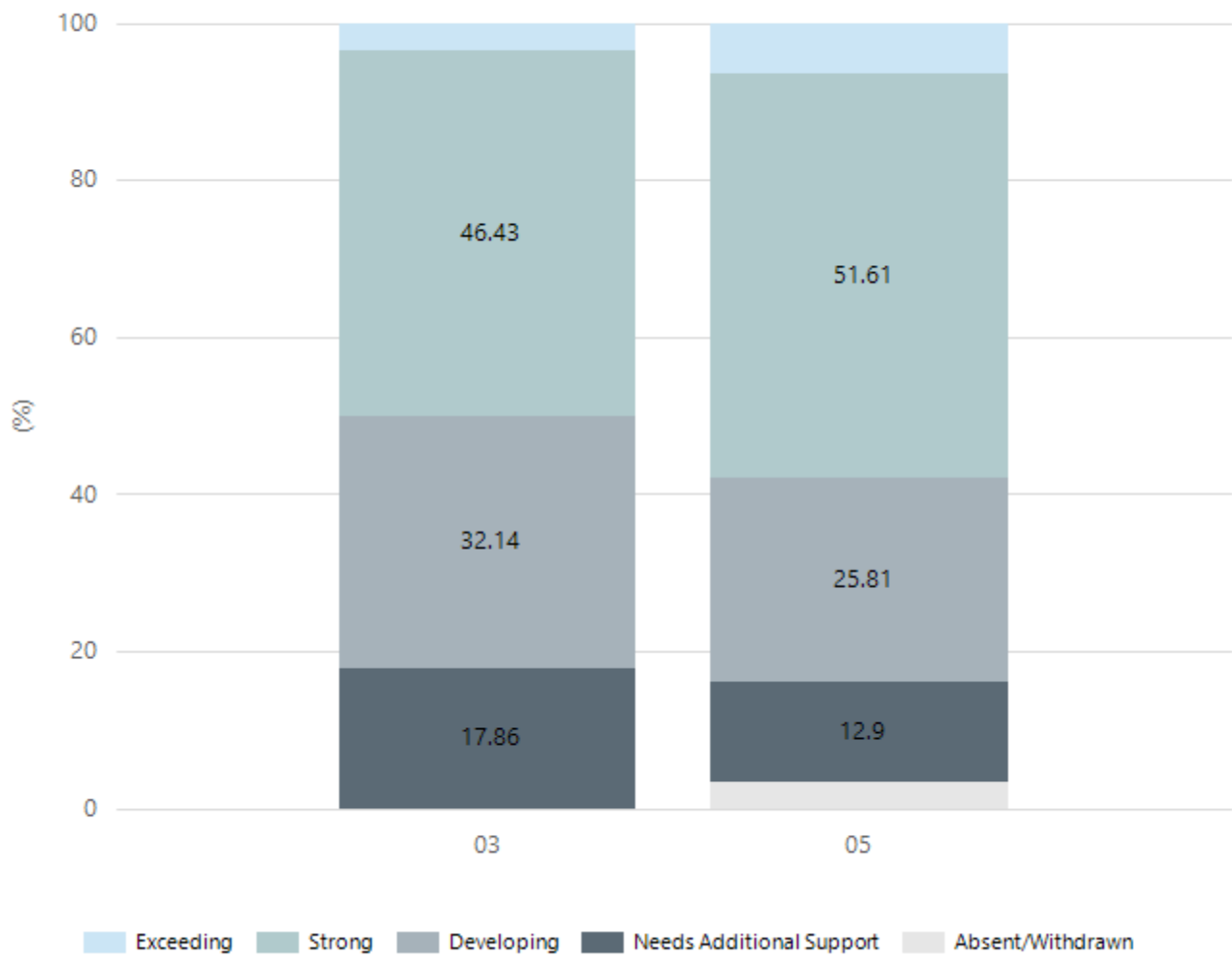
Grammar



Year Level	03	05
Exceeding	1	1
Strong	5	12
Developing	13	11
Needs Additional Support	9	6
Absent/Withdrawn		1
Total	28	31

Data Source: Department for Education Assessment Data Holdings, 2025. If there are less than 6 students who sat NAPLAN in a school, no information will be shown. If a year level has less than 6 students, that year level will not be shown in NAPLAN results.

Spelling



Year Level	03	05
Exceeding	1	2
Strong	13	16
Developing	9	8
Needs Additional Support	5	4
Absent/Withdrawn		1
Total	28	31

Data Source: Department for Education Assessment Data Holdings, 2025. If there are less than 6 students who sat NAPLAN in a school, no information will be shown. If a year level has less than 6 students, that year level will not be shown in NAPLAN results.

School Attendance

Year Level	2023	2024	2025
Reception	87.7%	85.9%	84.3%
Year 01	85.3%	85.7%	87.6%
Year 02	85.9%	89.9%	88.1%
Year 03	88.1%	87.2%	89.4%
Year 04	83.2%	85.6%	84.8%
Year 05	84.4%	80.6%	85.0%
Year 06	85.8%	85.5%	82.7%
Total	85.7%	85.6%	85.9%

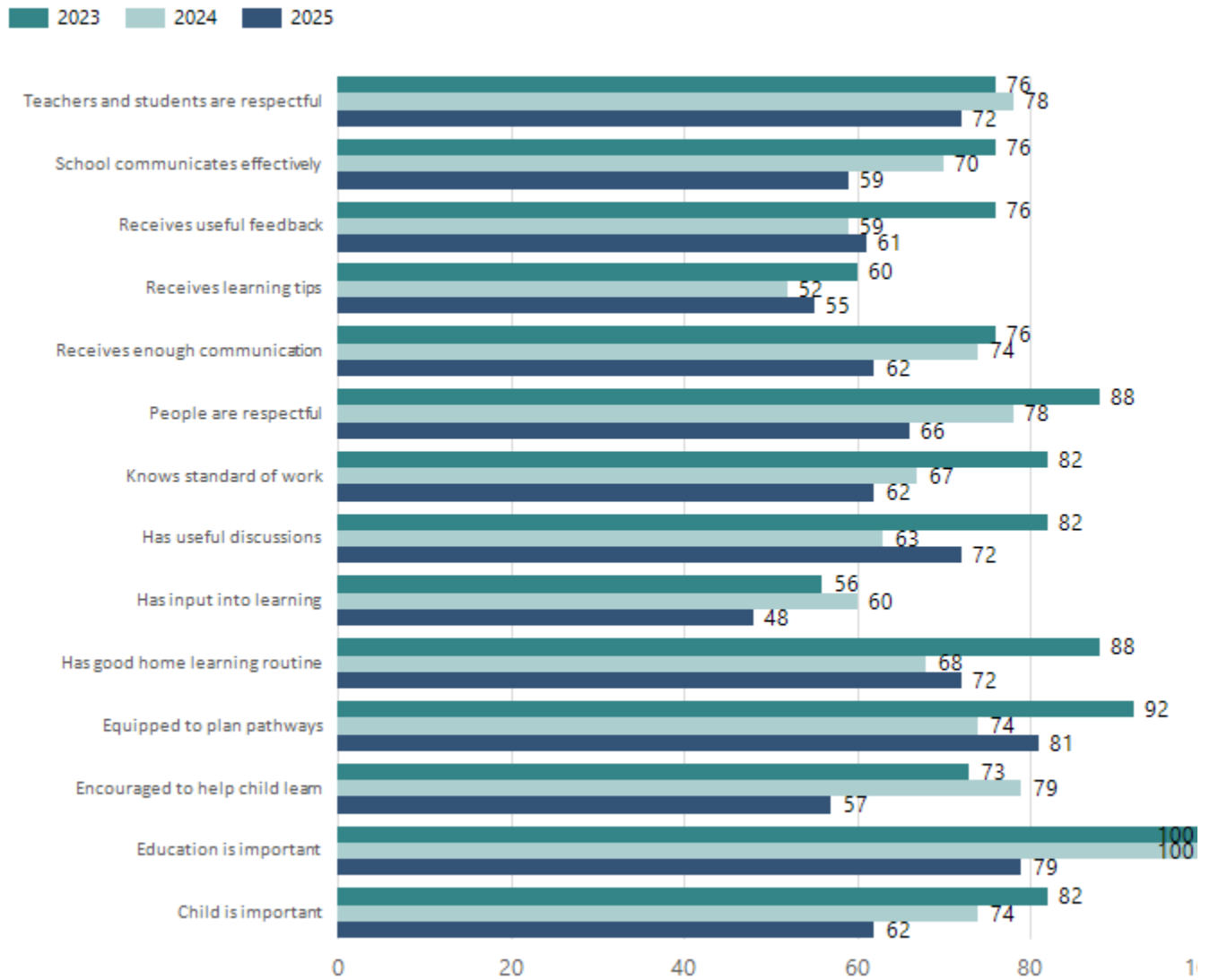
Data Source: Department for Education Attendance Data, Semester 1 Report 2025. A blank cell indicates there we no students enrolled. 'Primary Other' includes students enrolled in specialised education options. 'Secondary Other' includes students who have already spent a year at Year 12 and elected to undertake further study at Year 12.

Attendance Comment

In South Australia, all children and young people must be in school from 6 years to 16 years old. They must attend a government or non-government school full time. From age 16 to 17 however, young people must attend school or an approved learning program (such as an apprenticeship, traineeship, accredited course or university). Schools and parents must encourage and support students to come to school every day. Parents and caregivers must make sure their child is enrolled in a school, and attends school all day and everyday it is open, unless a child is sick or has an approved exemption. Teachers and leaders actively follow up when a student misses school, including recording all absences and non-attendance. All schools in South Australia have local attendance procedures governed under the Education and Children's Services Regulations 2020.

School Parent Opinion Survey Results

Proportion of agree/strongly agree response(%)



Data Source: 2025 Department for Education Parent Opinions Survey, Term 3 2025.

Intended Destination

Leave Reason	Number	%
IS - INTERSTATE	13	65.0%
NG - ATTENDING NON-GOV SCHOOL IN SA	6	30.0%
U - UNKNOWN	1	5.0%

Data Source: Department for Education Destination Data Report, 2025. Data extract term 3 2025. Data shows recorded destinations for students that left the school in the previous year. Data is uploaded by schools in term 3 and may not reflect final or total figures at time of report creation.

Highest Qualifications held by the teaching workforce and workforce composition

All teachers at this school are qualified and registered with the SA Teachers Registration Board.

Qualification Level	Number of Qualifications
Bachelor's degrees or Diplomas	15
Postgraduate Qualifications	5

Data Source: Data extracted from Mandatory Workforce Information Collections as on the last pay date of June 2025. As self-reported by staff in the system.

Please note: Data includes staff who are Actively employed and on extended paid leave. Please note only the highest qualification of the Teaching staff is reported. Excludes any number of other certifications earned.

Workforce composition including indigenous staff

	Teaching Staff		Non-Teaching Staff	
	Indigenous	Non-Indigenous	Indigenous	Non-Indigenous
Full-Time Equivalent	0.0	18.6	0.7	11.6
Persons	0.0	20.0	1.0	15.0

Data Source: Data extracted from Mandatory Workforce Information Collection as on the last pay date of June 2025.

Please note: Data includes staff who are actively employed and on extended paid leave. "Indigenous category" is self-reported by staff in the system.

Financial Statement

Funding Source	Amount
Grants: State	\$3794191.60
Grants: Commonwealth	\$4500.00
Parent Contributions	\$55935.36
Fund Raising	\$4896.13
Other	\$1707.42 (sundry income) \$16211.10 (hire of facilities) \$1348.36 (recoveries)

Data Source: School supplied data.